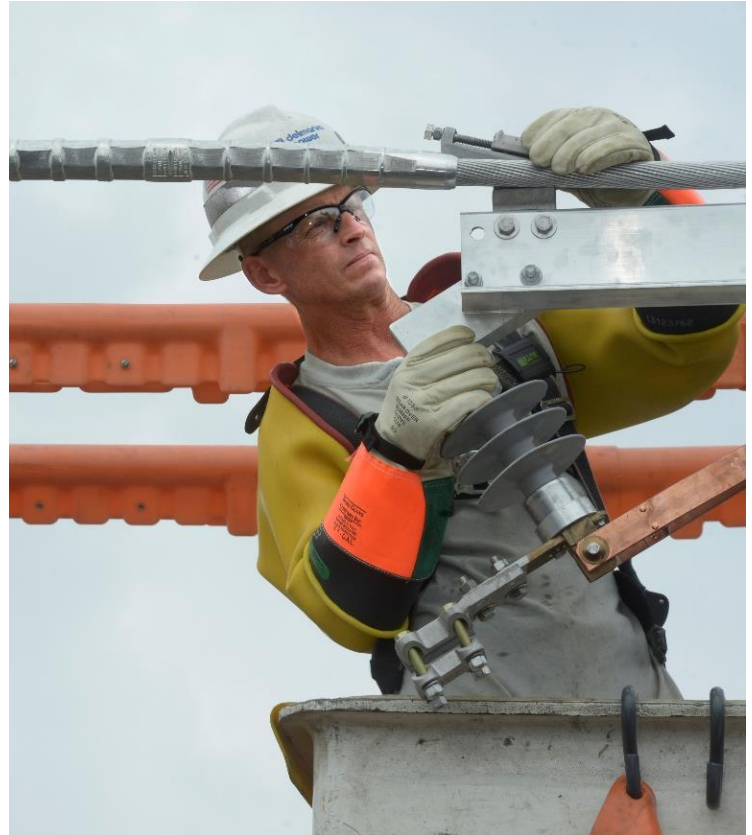


LYNCH TO MASSEY TRANSMISSION LINE REBUILD

Delmarva Power is committed to providing safe, reliable, and affordable service for our customers and communities. As part of this effort, we are planning a \$21-million project to rebuild and upgrade existing transmission and distribution lines running between Lynch and Massey.

Maintaining the safe and reliable service our customers expect requires ongoing work to modernize the local energy grid. These efforts are part of a broader reliability improvement plan to further reduce the frequency and duration of outages for Maryland customers.



WHY IT'S IMPORTANT

- **Enhances service reliability** for nearly 19,000 local customers.
- **Delivers energy more efficiently** by creating a smarter energy grid with greater automation between local substations.
- **Modernizes and increases the resiliency** of the infrastructure delivering energy for local customers.

Key Project Details

- 13.2 miles of transmission line and 2.5 miles of distribution line will be rebuilt
- Located in Kent County, Md.
- 213 wood structures will be replaced with 152 galvanized steel poles
- \$21-million investment in energy service reliability for local customers
- Benefits nearly 19,000 local customers.
- Construction expected to begin in late 2019 and completed by the end of 2019
- New poles will range in height from 70 ft. to 120 ft.

About the Rebuild

We conducted a comprehensive review of potential options to enhance service reliability and determined that rebuilding the existing transmission line would be the most cost-effective and least impactful option.

Replacing existing utility poles with new galvanized steel poles will strengthen the local energy grid and reduce the number of transmission poles along the route. These more reliable structures are designed to withstand severe weather conditions, such as 120 mph winds and other storm related events. Steel poles offer significant improvements in reliability, longevity, and uniformity when compared to equivalent wood poles. They have a much longer service life than wood poles and require much less maintenance over time.

In addition to adding steel poles, we will also upgrade the existing transmission line with new wire and other modern electric devices.

Together these important upgrades will prevent outages and enhance overall reliability for the residents of Kent County.

About the Construction Process

Safety for our customers, communities, and employees is our top priority. We are committed to minimizing impacts to the local community throughout the construction of the project. Construction is expected to begin in September 2019 and the project will be in-service by December 2019—weather permitting. We will continue to keep the community informed throughout the entire process.

We will perform all work within the times identified in the construction permits and keep noise levels from construction activities within established thresholds. We will also confine project activities to the utility right-of-way of our transmission line and restore all areas affected by construction.



This photo rendering shows what the new galvanized steel poles are expected to look like along the rebuilt transmission line in Kent County.

Enhancing Reliability in Maryland

At Delmarva Power, we analyze and evaluate the local energy grid on an ongoing basis to identify infrastructure projects that will help us continue to provide reliable service and meet our customers' needs.

Over the last five years, Delmarva Power has spent hundreds of millions of dollars in Maryland modernizing the local energy grid and enhancing reliability for customers. Because of this, our customers continue to experience record electric service reliability. In fact, over the last five years, the frequency of electric outages in our Maryland service area has decreased 40 percent.