

## Ready to take action?

Our Energy Calculators help you determine how much savings you can expect by choosing energy efficient appliances or simple habit changes like lowering your thermostat. Each savings estimate is tailored by your personal profile.



### Appliance Calc

How much does it cost to run your appliances?



### Lighting Calc

How much can you save using CFL's?



### Thermo Calc

Save simply by adjusting your thermostat. See how!



### Water Heater Calc

How much can you save by replacing your water heater?

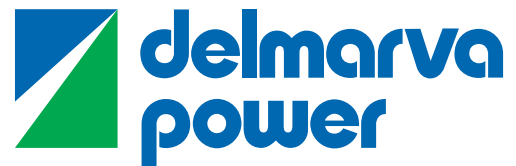
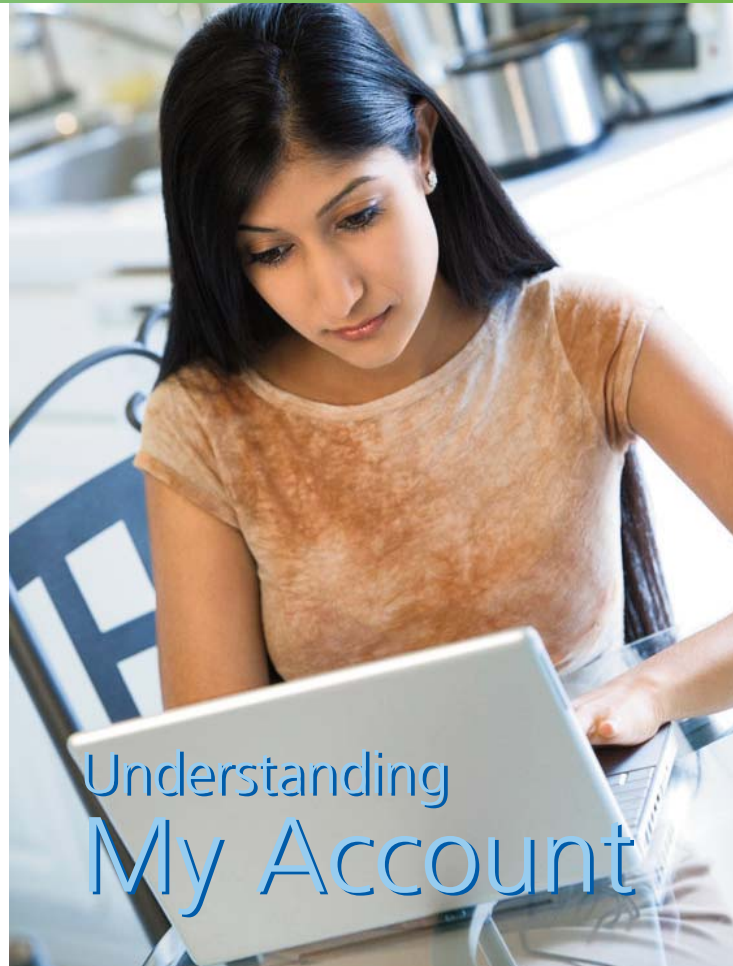
**LOG ON TO MY ACCOUNT AND SELECT CALCULATE IMPROVEMENTS FROM THE TOP MENU AND TRY ALL OF OUR ENERGY CALCULATORS.**

**GET STARTED NOW! HAVE THIS INFORMATION AVAILABLE WHEN YOU'RE READY TO LOG ON:**

- a copy of your Delmarva Power bill
- property details (style, age, number of rooms, square footage of home)
- property features (heating and cooling system types/fuels, water heater fuel)
- household and appliance details (number of people, number and type of appliances)

**VISIT [DELMARVA.COM/HOME/BILLING/MYACCOUNT.ASPX](http://DELMARVA.COM/HOME/BILLING/MYACCOUNT.ASPX)**

277-11-09.MA.DP



Your life. Plugged in.™

Learn how you can save on your energy costs with My Account. This easy-to-use, free service is available on our Web site, [delmarva.com](http://delmarva.com).

Answer a few simple questions about your home, your family and your appliances and My Account will help you monitor your monthly electric and/or gas usage, learn to manage your energy costs, and provide recommendations on how to save based on your personalized energy profile.

How much do I owe? How can I view and pay my bill?

How can I reduce my carbon footprint?

Why has my bill changed from last month?

What do my appliances cost to run? How can I control my energy costs?

How do my energy costs compare to similar homes?

The screenshot displays the 'My Account' website interface. At the top, there are navigation tabs: 'My Bill', 'My Home', 'Find Ways to Save', 'Calculate Improvements', and 'Learn About Energy'. Below these are links for 'Bill History' and 'Bill Analysis'. The main content area is titled 'Bill Center' and includes a 'Welcome Back' message. It features an 'Account Summary' for account 1234567890, showing an account status as of 1/1/2010 with a last payment of \$200.00 and an account balance of \$200.00. A 'View & Pay Bill' button is present. Below this is a 'Bill Summary ending 12/31/2009' with a remaining balance of \$0.00 and an amount due of \$200.00. The 'Bill Highlights' section for 100 MAIN ST lists several factors for bill changes: budget-billing, a \$27.24 decrease in current charges, a \$15.00 increase due to weather, and an increase in electric usage. It also notes a correction to electric charges. The 'Bill Analysis' section prompts users to find out why their bill changed. Two comparison charts are shown: 'How does my usage compare?' with a bar chart of electric use (Kwh) for December 2008 (646) and December 2009 (736); and 'How does my home compare?' with a horizontal bar chart comparing 'My Home' (\$200) to 'Avg. Home' (\$255) for total costs. A 'Control my costs!' section identifies heating as the highest expense and offers 'Find ways to save' recommendations. A 'Save A Tree Go Paperless' banner is also visible. The interface includes various interactive elements like question marks and expand/collapse icons.

Get started today! Click on "My Account" at [delmarva.com](http://delmarva.com)