

## WISE ENERGY USE = REAL SAVINGS

Have your energy costs gone up?

If so, here's a plan for potentially saving on your next bill:

- You could save \$35 a month by installing thicker insulation in your attic. (You can also get up to \$500 in federal tax credits for insulating your home.)
- You could save \$18 a month by turning your thermostat back approximately 4 degrees in the winter and up 3 degrees in the summer (1 degree is 3-4%).
- You could save \$14 a month by sealing leaky ductwork, caulking around windows and weather stripping around doors.
- You could save \$6 a month by washing clothes in cold water.
- You could save \$5 a month by replacing five of your most frequently used traditional bulbs with compact fluorescent light bulbs.
- You could save \$4 a month by dropping your water heater temperature from 140 degrees to 120 degrees Fahrenheit.
- You could save \$2 a month by replacing an older model dishwasher with a newer model featuring the EPA's Energy Star symbol.

### KNOW MORE:

To know more about how you can save energy, go to [www.delmarva.com](http://www.delmarva.com)  
Or call Customer Care:  
**1-800-375-7117**

## VISIT OUR WEBSITE FOR ENERGY KNOW HOW SOLUTIONS



To monitor your monthly usage, you can look to your Delmarva Power bill which tells you how many kilowatt hours of electricity and/or centi-cubic feet of natural gas you used during that billing period. It also tells you how your energy usage compares to the same billing period a year ago.

In addition to your bill, you can also get personalized energy usage

information from Delmarva Power's web site, [www.delmarva.com](http://www.delmarva.com), by using Energy Know How Solutions, a free service to our customers. This web-based service enables customers to create their own personal energy profile based on their home, the number of people living in it, the age of their appliances and other necessary information - all of which is used to determine ways you can save on your energy costs.

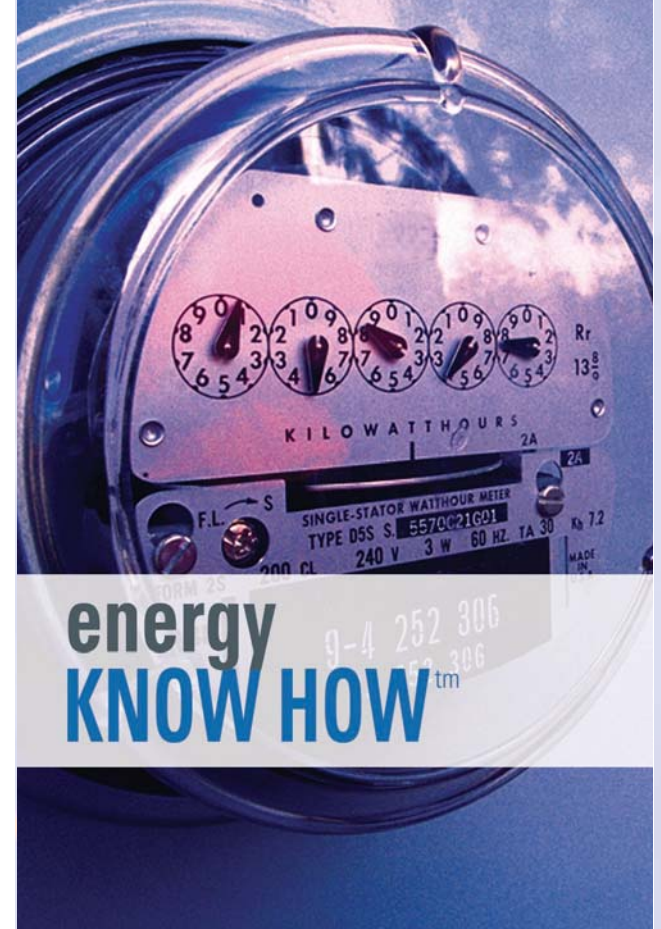
Check out Energy Know How Solutions today at [www.delmarva.com](http://www.delmarva.com). It's free - all you need to know is your 12-digit Delmarva Power account number and the name on the account.



*We're connected to you by more than power lines.®*

[www.delmarva.com](http://www.delmarva.com)

202-07-06/DP



Know How to Save Energy & Money.



A PHI Company

energy  
KNOW HOW™

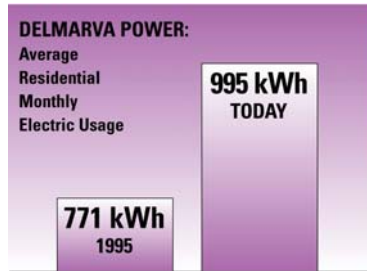
## KNOW HOW TO SAVE ENERGY AND MONEY

With the demand for energy rising along with its costs, many consumers want to know what they can do to conserve energy for both environmental and economical reasons. Delmarva Power encourages its customers to use energy wisely. We recognize that energy conservation is in the best interest of our customers. And we're glad to provide our customers with the Energy Know How for achieving it.

The first step to saving on energy and money is understanding how much energy you use and what it is costing you. From there, you can take the necessary steps to reduce your usage and costs.

## KNOW HOW MUCH ENERGY YOU USE

On average, Delmarva Power residential customers use approximately 995 kilowatt hours of electricity a month - a 29 percent increase from 1995. That jump in electricity usage really is no surprise given today's larger-sized homes, oversized televisions and fascination for electronic gadgets.



## KNOW HOW MUCH ELECTRICITY COSTS

Energy savings begins with knowing what it costs to operate the many electrical appliances in your home.

**By knowing what it costs to run certain appliances, you also gain the know-how you need to reduce their usage and save on your monthly energy costs. See the Appliance Chart at right.**

Use the chart below to determine the monthly costs of common appliances based on a \$0.14 cents per kilowatt hour rate, which is the cost, on average, for Delmarva Power residential customers in Delaware, Maryland and Virginia.

### Large Appliances

Appliance	Energy Consumption
Air Conditioner	233 kWh/month
Heating System*	294 kWh/month
Water Heater*	213 kWh/month
Refrigerator	1460 kWh/year
Freezer	900 kWh/year
Clothes Washer	2.1 kWh/load
Clothes Dryer	2.3 kWh/load
Dishwasher	2.8 kWh/load
Cooking Range*	1000 Watts
Oven*	2300 Watts

### Small Appliances

Appliance	Energy Consumption
Broiler	1500 Watts
Deep Fryer	1000 Watts
Drip Coffee Maker	1500 Watts
Garbage Disposal	750 Watts
Microwave	1500 Watts
Percolator Coffee Maker	600 Watts
Slow Cooker	200 Watts
Toaster	1100 Watts
Toaster Oven	1200 Watts

### Home Care Appliances

Appliance	Energy Consumption
Central Vacuum	1000 Watts
Hand Held Vacuum	300 Watts
Vacuum Cleaner	650 Watts

### Electronics

Appliance	Energy Consumption
Answering Machine	1 Watt
Cable Box	20 Watts
Computer and Monitor	65 Watts
Cordless Telephone	2.8 Watts
Fax Machine	175 Watts
Home Copier	115 Watts
Printer	45 Watts
Satellite Dish	15 Watts
Stereo	60 Watts
TV Color	77 Watts
TV Color Projection	150 Watts
VCR	11 Watts
Video Games	20 Watts

### Comfort Appliances

Appliance	Energy Consumption
Ceiling Fan	75 Watts
Dehumidifier	350 Watts
Electric Air Cleaner	50 Watts
Humidifier	75 Watts
Portable Fan	30 Watts
Whole House Fan	360 Watts

### Miscellaneous

Appliance	Energy Consumption
Aquarium	550 kWh/year
Clock	18 kWh/year
Clothes Iron	1100 Watts
Garage Door Opener	53 kWh/year
Hair Dryer	700 Watts
Home Security System	30 Watts

### Pools & Pumps

Appliance	Energy Consumption
Pool Heat Pump	12000 Watts
Pool Pump: 1/2 hp	750 Watts
Pool Pump: 2 hp	2000 Watts
Spa	11000 Watts
Sump Pump	60 Watts
Well Pump: 0.5 hp	300 Watts
Well Pump: 1.0 hp	600 Watts
Well Pump: 2.0 hp	1200 Watts

### Energy Consumption

Appliance	Energy Consumption
Air Conditioner	233 kWh/month
Heating System*	294 kWh/month
Water Heater*	213 kWh/month
Refrigerator	1460 kWh/year
Freezer	900 kWh/year
Clothes Washer	2.1 kWh/load
Clothes Dryer	2.3 kWh/load
Dishwasher	2.8 kWh/load
Cooking Range*	1000 Watts
Oven*	2300 Watts

### Energy Consumption

Appliance	Energy Consumption
Broiler	1500 Watts
Deep Fryer	1000 Watts
Drip Coffee Maker	1500 Watts
Garbage Disposal	750 Watts
Microwave	1500 Watts
Percolator Coffee Maker	600 Watts
Slow Cooker	200 Watts
Toaster	1100 Watts
Toaster Oven	1200 Watts

### Energy Consumption

Appliance	Energy Consumption
Central Vacuum	1000 Watts
Hand Held Vacuum	300 Watts
Vacuum Cleaner	650 Watts

### Energy Consumption

Appliance	Energy Consumption
Answering Machine	1 Watt
Cable Box	20 Watts
Computer and Monitor	65 Watts
Cordless Telephone	2.8 Watts
Fax Machine	175 Watts
Home Copier	115 Watts
Printer	45 Watts
Satellite Dish	15 Watts
Stereo	60 Watts
TV Color	77 Watts
TV Color Projection	150 Watts
VCR	11 Watts
Video Games	20 Watts

### Energy Consumption

Appliance	Energy Consumption
Ceiling Fan	75 Watts
Dehumidifier	350 Watts
Electric Air Cleaner	50 Watts
Humidifier	75 Watts
Portable Fan	30 Watts
Whole House Fan	360 Watts

### Energy Consumption

Appliance	Energy Consumption
Aquarium	550 kWh/year
Clock	18 kWh/year
Clothes Iron	1100 Watts
Garage Door Opener	53 kWh/year
Hair Dryer	700 Watts
Home Security System	30 Watts

### Energy Consumption

Appliance	Energy Consumption
Pool Heat Pump	12000 Watts
Pool Pump: 1/2 hp	750 Watts
Pool Pump: 2 hp	2000 Watts
Spa	11000 Watts
Sump Pump	60 Watts
Well Pump: 0.5 hp	300 Watts
Well Pump: 1.0 hp	600 Watts
Well Pump: 2.0 hp	1200 Watts

### Usage

Appliance	Usage
Air Conditioner	4 months a year
Heating System*	6 months a year
Water Heater*	24 hours a day
Refrigerator	24 hours a day
Freezer	24 hours a day
Clothes Washer	7 loads a week
Clothes Dryer	7 loads a week
Dishwasher	5 loads a week
Cooking Range*	1 hour/day
Oven*	1 hour/day

### Usage

Appliance	Usage
Broiler	15 min./day
Deep Fryer	60 min./week
Drip Coffee Maker	15 min./day
Garbage Disposal	15 min./week
Microwave	15 min./day
Percolator Coffee Maker	30 min./day
Slow Cooker	8 hours/week
Toaster	30 min./week
Toaster Oven	15 min./day

### Usage

Appliance	Usage
Central Vacuum	60 min./week
Hand Held Vacuum	15 min./week
Vacuum Cleaner	60 min./week

### Usage

Appliance	Usage
Answering Machine	24 hours/day
Cable Box	4 hours/day
Computer and Monitor	4 hours/day
Cordless Telephone	24 hours/day
Fax Machine	1 hour/week
Home Copier	1 hour/week
Printer	2 hours/week
Satellite Dish	4 hours/day
Stereo	1 hour/day
TV Color	4 hours/day
TV Color Projection	4 hours/day
VCR	2 hours/day
Video Games	2 hours/day

### Usage

Appliance	Usage
Ceiling Fan	6 hours/day
Dehumidifier	4 hours/day
Electric Air Cleaner	3 hours/day
Humidifier	2 hours/day
Portable Fan	8 hours/day
Whole House Fan	1 hour/day

### Usage

Appliance	Usage
Aquarium	24 hours/day
Clock	24 hours/day
Clothes Iron	60 min./week
Garage Door Opener	24 hours/day
Hair Dryer	15 min./day
Home Security System	16 hours/day

### Usage

Appliance	Usage
Pool Heat Pump	6 hours/day
Pool Pump: 1/2 hp	24 hours/day
Pool Pump: 2 hp	24 hours/day
Spa	3 hours/day
Sump Pump	1 hour/day
Well Pump: 0.5 hp	2 hours/day
Well Pump: 1.0 hp	2 hours/day
Well Pump: 2.0 hp	2 hours/day

### Cost Per Month

Appliance	Cost Per Month
Air Conditioner	\$32.62
Heating System*	\$41.16
Water Heater*	\$29.82
Refrigerator	\$17.03
Freezer	\$10.50
Clothes Washer	\$8.12
Clothes Dryer	\$8.96
Dishwasher	\$7.80
Cooking Range*	\$4.20
Oven*	\$9.60

### Costs Per Month

Appliance	Costs Per Month
Broiler	\$1.57
Deep Fryer	\$0.56
Drip Coffee Maker	\$1.57
Garbage Disposal	\$0.11
Microwave	\$1.57
Percolator Coffee Maker	\$1.26
Slow Cooker	\$0.90
Toaster	\$0.31
Toaster Oven	\$1.26

### Cost Per Month

Appliance	Cost Per Month
Central Vacuum	\$0.56
Hand Held Vacuum	\$0.04
Vacuum Cleaner	\$0.36

### Cost Per Month

Appliance	Cost Per Month
Answering Machine	\$0.10
Cable Box	\$0.34
Computer and Monitor	\$1.09
Cordless Telephone	\$0.28
Fax Machine	\$0.10
Home Copier	\$0.06
Printer	\$0.05
Satellite Dish	\$0.25
Stereo	\$0.25
TV Color	\$1.29
TV Color Projection	\$2.52
VCR	\$0.09
Video Games	\$0.17

### Cost Per Month

Appliance	Cost Per Month
Ceiling Fan	\$1.89
Dehumidifier	\$5.88
Electric Air Cleaner	\$0.63
Humidifier	\$0.63
Portable Fan	\$1.00
Whole House Fan	\$1.51

### Cost Per Month

Appliance	Cost Per Month
Aquarium	\$6.42
Clock	\$0.21
Clothes Iron	\$0.62
Garage Door Opener	\$.62
Hair Dryer	\$0.74
Home Security System	\$2.02

### Cost Per Month

Appliance	Cost Per Month
Pool Heat Pump	\$302.40
Pool Pump: 1/2 hp	\$75.60
Pool Pump: 2 hp	\$201.60
Spa	\$138.60
Sump Pump	\$0.25
Well Pump: 0.5 hp	\$2.52
Well Pump: 1.0 hp	\$5.04
Well Pump: 2.0 hp	\$10.08

\*Calculations are based on electric-fired systems.