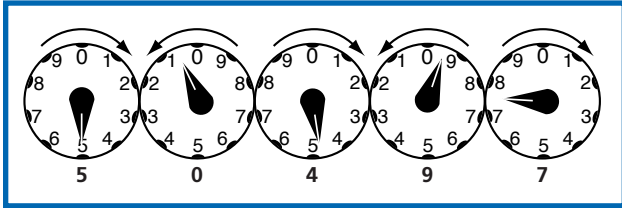


Know How to Read Your Meter:

Reading your meter is easy. Starting from the left, look at the hands on each dial and write down the last number passed by the hand. If the hand is between two numbers, always write down the smaller one. The reading for the illustration below is 50497.



To find the amount of energy used between two readings, subtract the first reading from the second.

Note: Some meters have digital displays.

For billing questions and concerns,
call Customer Care at 1-800-375-7117.

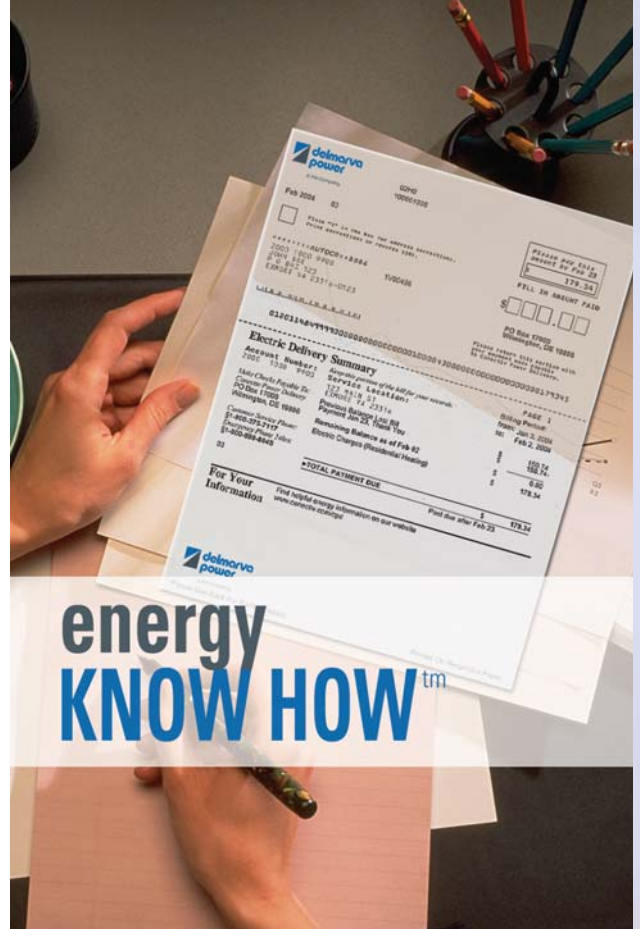


A PHI Company

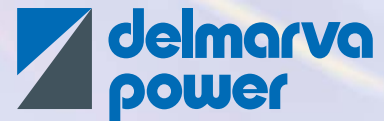
energy
KNOW HOW[™]

www.delmarva.com

202-07-06/DP



Delaware Customers:
Know How to Read Your Bill.



A PHI Company

energy
KNOW HOW[™]

Know How to Read Your Bill:

delmarva power
A P&E Company

GA00 100000330

Jun 2006 08

Please pay this amount by Jul 2
\$ 53.91

FILL IN AMOUNT PAID
\$

PO Box 17000
Wilmington, DE 19886

Electric Delivery Summary
Account Number: 0123 4567 8910
Service Location: 101 DRIVE RD NEWARK DE 19702
Billing Period: May 10, 2006 to Jun 9, 2006
Previous Balance Last Bill: \$ 43.99
Payment May 31, Thank You: \$ 43.99
Remaining Balance as of Jun 09: \$ 0.00
Electric Charges (Residential Heating): \$ 53.91
TOTAL PAYMENT DUE: \$ 53.91

For Gas Leaks and Emergencies
Find help@utilityenergy.info or www.delmarva.com

delmarva power
A P&E Company

GA00 100000331

JOHN DOE
101 DRIVE RD
NEWARK DE 19702-6323

Service Location:
101 DRIVE RD
NEWARK DE 19702

Electric Meter Information
Meter Number: 202254220804
Current Meter Reading: Jun 9 (actual) 081141
Last Meter Reading: May 10 (actual) 080568
Total kWh Used: 473

Your Next Scheduled Meter Reading is Jul 11, 2006

Electric Delivery Charges
Current charges for 30 days - Summer Rates in Effect - Residential Heating
For Account: 0123 4567 8910, the class average annual price to compare is: 10.12 cents per kWh

Delivery Charges	\$ 4.76
Customer Charge	\$ 9.32
Distribution Charge: First 473 kWh X \$0.019721 Each kWh	\$ 9.32
Total Electric Delivery Charges	\$ 14.08
Supply Charges:	
Transmission Charge: 473 kWh X \$0.003485 Each kWh	\$ 1.65
Standard Offer Service Charge: First 473 kWh X \$0.120543	\$ 57.00
Phase-In Credit/Charge: First 473 kWh X \$0.039796 Each kWh	\$ 18.82
Total Electric Supply Charges	\$ 39.83
Total Electric Charges	\$ 53.91

Your Electric Energy Comparison
Daily Averages: Jun 05 Jun 06
Temp: NA NA
KWH: 657 15.8
NA = Not Available

Monthly Usage in kWh
Bar chart showing usage from June 2005 to June 2006. Usage peaks in winter months (Dec, Jan, Feb) and is lowest in summer months (Jun, Jul, Aug).

Payment Coupon

Return this portion with your payment

1. The address where we send your bill.
2. The total amount due and the date the payment is due.

Electric Delivery Summary

A snapshot of your payments and charges.

3. The account number that should be used when calling or writing to us.
4. The address where you receive service.
5. The billing period is the time in which you received service and are being billed.
6. The address, business and emergency phone numbers to use when contacting Customer Care.
7. A summary of the payments received and the total amount now due.
8. The mailing address, service address and account number are all listed again for easy reference.

Electric Meter Information

9. Shows the amount of electricity you used and the meter reading information.
10. The approximate date of your next meter reading.

Electric Delivery Charges

11. The number of days included on your bill, which seasonal rate is in effect, and your rate class.
12. The account number and price to compare are here to make it easier to discuss your energy usage and costs with a third party supplier.
13. Your detailed electric charges for the month. See definitions below.

Your Electric Energy Comparison

A tool to help you manage your energy use.

14. The average temperature for this month and for the same month last year and the average daily amount of electricity usage in kilowatt hours.
15. A chart of your monthly usage for the past year.

Definitions:

Delivery Charges – A combination of charges that you pay to transport the commodity of electricity from the power plant to your home or business, via the pole and wires.

Customer Charge – The costs of maintaining service to a customer, regardless of how much energy is used.

Distribution Charge – The cost of moving electricity from your local substation and power lines to your home or business.

Total Electric Delivery Charges

– A subtotal of your delivery charges

Supply Charges – This is the portion of your bill you can compare to offers from competitive suppliers. If you choose a new supplier, you will pay the supplier's price for the commodity of electricity instead of the price you currently pay Delmarva Power.

Standard Offer Service and

Transmission – This is the supply service you receive if you do not choose

a new supplier. The Delaware Public Service Commission regulates these rates.

Phase-In Credit/Charge – The dollar impact for participating in the Delaware Rate Phase-In Plan.

Total Electric Supply Charges – A subtotal of your supply charges.

Total Electric Charges – The total of all charges for the month, including both delivery and supply charges.